

# **EXHIBIT B**

< Browse the Collection

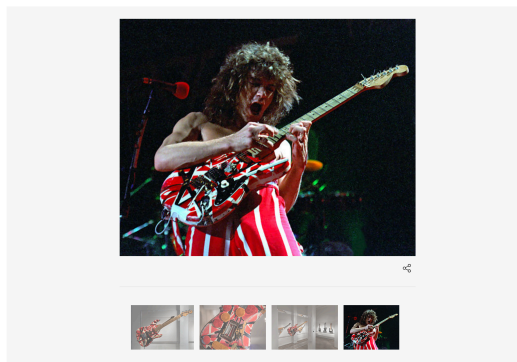
## "Frankenstein," composite electric guitar, 1975

Edward Lodewijk "Eddie" Van Halen

Aptly nicknamed "Frankenstein," this guitar was pieced together by Eddie Van Halen from modified factory seconds and mismatched odd-lot parts, then spray-painted. It represents an effort to combine some of the most desirable elements of Gibson and Fender guitars into a single instrument that was not commercially available at the time. Van Halen was continually striving to achieve the ultimate guitar for tone, playability, dependability, and functionality. The unique guitar embodies not only his groundbreaking and unorthodox playing style but also his ingenuity in design and engineering. One of the most recognizable guitars of all time, it spawned legions of copies from other manufacturers and inspired generations of fans to design their own instruments.

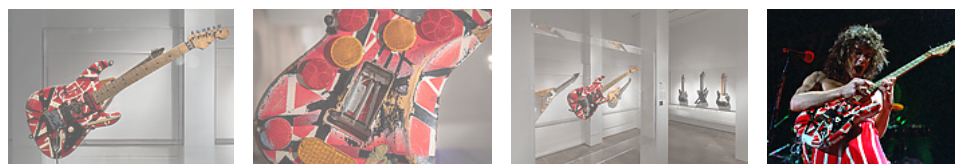
[READ MORE](#)

On view at The Met Fifth Avenue in [Gallery 392](#)



### Object Details

<b>Artist:</b>	Edward Lodewijk "Eddie" Van Halen (American, born Nijmegen, Netherlands, 1955)
<b>Date:</b>	1975
<b>Medium:</b>	Ash, maple, nickel, chrome, plastic, spray paint
<b>Dimensions:</b>	Length: 39 1/4 in. (99.7 cm) Width: 13 in. (33 cm) Depth: 1 3/4 in. (4.4 cm) Weight: 7-8 lbs. (3.2 - 3.6 kg)
<b>Classification:</b>	Chordophone-Lute-plucked-fretted
<b>Credit Line:</b>	Courtesy of Eddie Van Halen

[Buy Tickets](#)

## "Frankenstein," composite electric guitar, 1975

**Edward Lodewijk "Eddie" Van Halen**

Aptly nicknamed "Frankenstein," this guitar was pieced together by Eddie Van Halen from modified factory seconds and mismatched odd-lot parts, then spray-painted. It represents an effort to combine some of the most desirable elements of Gibson and Fender guitars into a single instrument that was not commercially available at the time. Van Halen was continually striving to achieve the ultimate guitar for tone, playability, dependability, and functionality. The

[Buy Tickets](#)

legions of copies from other manufacturers and inspired generations of fans to design their own instruments.

[READ MORE](#)

 On view at The Met Fifth Avenue in [Gallery 199](#)

---

## Object Details

<b>Artist:</b>	Edward Lodewijk "Eddie" Van Halen (American, born Nijmegen, Netherlands, 1955)
<b>Date:</b>	1975
<b>Medium:</b>	Ash, maple, nickel, chrome, plastic, spray paint
<b>Dimensions:</b>	Length: 39 1/4 in. (99.7 cm) Width: 13 in. (33 cm) Depth: 1 3/4 in. (4.4 cm) Weight: 7-8 lbs. (3.2 - 3.6 kg)
<b>Classification:</b>	Chordophone-Lute-plucked-fretted
<b>Credit Line:</b>	Courtesy of Eddie Van Halen

---

## References

<https://www.smithsonianmag.com/arts-culture/q-and-a-with-eddie-van-halen-159357298/>

[Buy Tickets](#)

**About The Met**

**Blogs**

**Videos**

**Press**

---

**The Met Fifth Avenue**

1000 Fifth Avenue  
New York, NY 10028  
Phone: 212-535-7710

**The Met Breuer**

945 Madison Avenue  
New York, NY 10021  
Phone: 212-731-1675

**The Met Cloisters**

99 Margaret Corbin Drive  
Fort Tryon Park  
New York, NY 10040  
Phone: 212-923-3700

**Site Index**

**Terms and Conditions**

**Privacy Policy**

**Buy Tickets**

© 2000–2019 The Metropolitan Museum of Art. All rights reserved.